

Cycling & Standup paddle board in the northernmost of Hokkaido Rishiri Island



Rishiri the northernmost city of Hokkaido. Its incredible natural features, from mountains to wetlands. Also it centered around the impressive Mount Rishiri, it reaches at least 1,721 metres and provides a good source of freshwater. You can find travel inspiration and learn about the region's history where you can deepen your understanding of the area by cycling and Standup paddle board, and find travel inspiration and learn about living on fishing and nature tourism.

Brief Itinerary

Warm welcome at Oshidomari Port Ferry Terminal (L)

Meals as mentioned in the itinerary (B = Breakfast, L = Lunch, D = Dinner)

Highlights:

- Cycling: Enjoy the magnificent landscapes of Hokkaido
- Standup paddle board : Go to places that can not be reached by car or on foot
- Learning about Rishiri's local industry and history through lectures and activities.

Location:

Hokkaido Rishiri Island

Rishiri Island is a high island in the Sea of Japan off the coast of Hokkaido. It lays in the Sea of Japan approximately 20 kilometers to the west from Wakkanai city and roughly circular with a coastline of 63 kilometres. Administratively the island is part of Hokkaido Prefecture, and is divided between two towns, Rishiri and Rishirifuji.

Main Activity: Cycling

Difficulty: 2

Tour Dates: June – August

Pax: Minimum 4 Maximum 6

Price: JPY57,500 for 6 pax

[Route map](#)

[Day-by-day Itinerary](#)

[What's included](#)

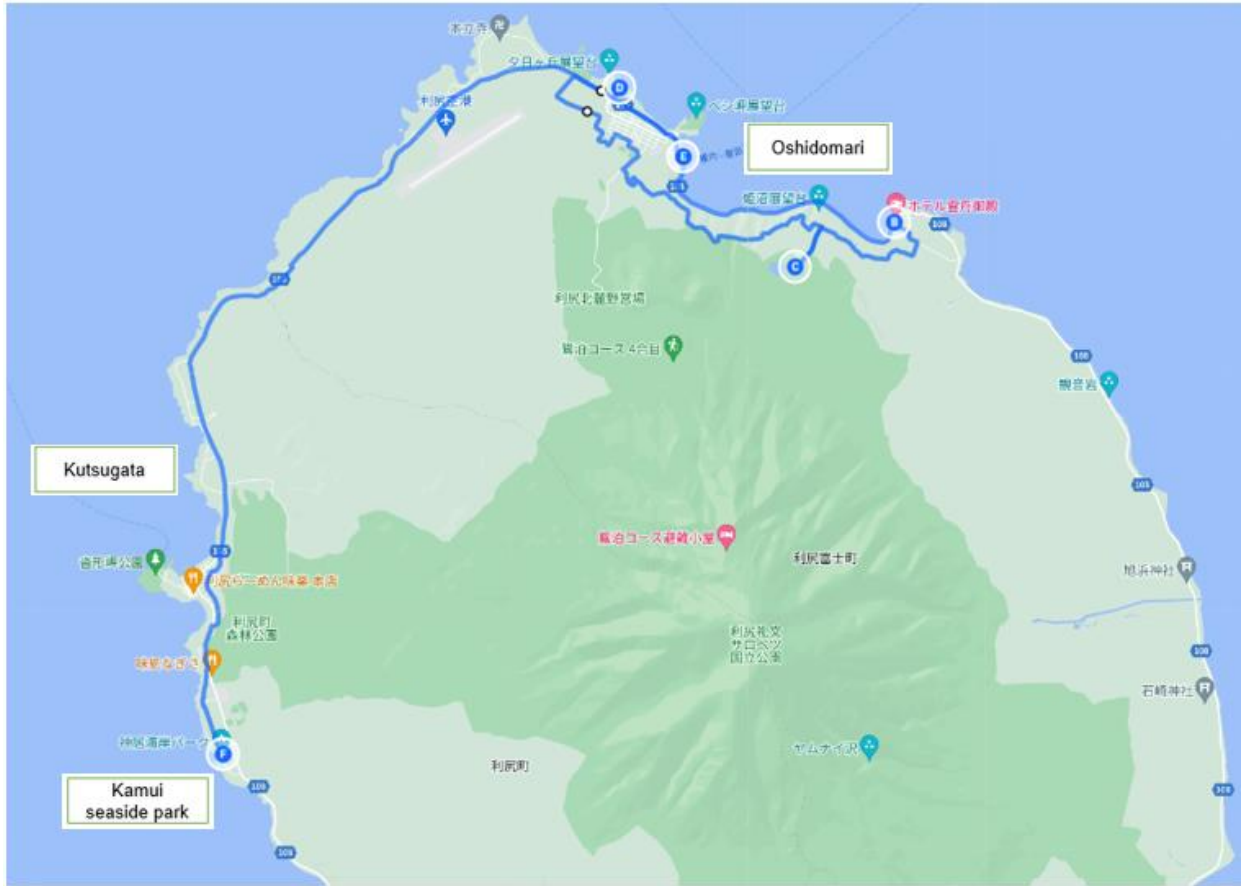
[We provide & What to bring](#)

[About us](#)

[Information and Requirements](#)

[Reservation & Cancellation policy](#)

Route map



Visit area	Distance
Oshidomari -> Kamui seaside park	approx. 17.4km
Kamui seaside park -> Oshidomari	approx. 17.4km

Day-by-day Itinerary

Day 1 -Cycling along the seaside with a stunning view

Welcome to Hokkaido! You will be greeted by our tour guide at Oshidomari Port Ferry Terminal (9:00am) and we to get to the site of today's first activity

After a briefing at the cycling starting point Oshidomari Port the gateway to Rishiri Island, we will start our ride at 09:30am. The total cycling time is around 2 hrs, , total distance in around 18km. For this cycling activity, we will ride on Blue Line cycling course while viewing the Sea of Japan to have a look of the terrain of this area, also enjoy the sea breeze and the great outdoors as you ride around the island.

Lunch

The lunch on this day is a ramen Crafted from Fresh Local Produce, served at Rishiri Ramen Miraku.

Rishiri Ramen Miraku has been featured on the 2012 Hokkaido Special Edition Michelin Guide and subsequently received the Bib Gourmand title in 2017. It uses the thick curled noodles and the top quality Rishiri Kombu kelp harvested around the island.

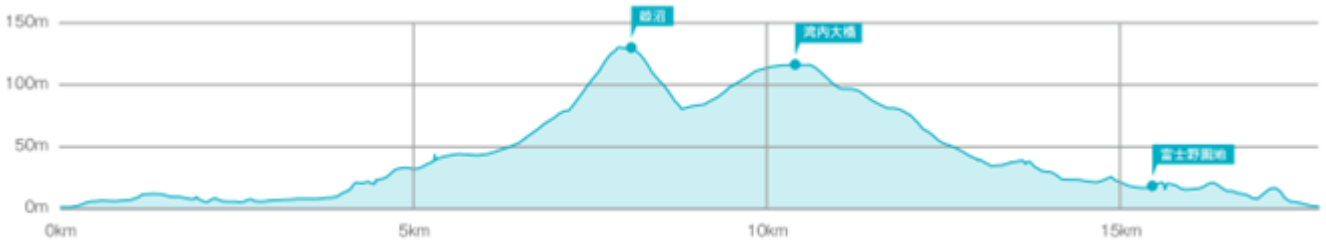
Rishiri Kombu is also said to be one of the three most delicious kelps in the country. Rishiri Kombu is characterised by its sharp and slightly saltier taste compared to other regional kelps.

After lunch, we will have urchin catching experience at Kamui Kaigan Park. you get to experience what it's like to be a fisherman that harvests Sea Urchin .Use the same boats and apparatus used by the local fishermen and Look down at the seabed with a special glass box to scoop them up. You can taste the sweet with indescribably creamy texture urchin.

After a unique experience, the Standup paddle board is waiting for you! The most beautiful sea in Hokkaido Incredibly clear water in the immediate vicinity of the harbor is something that can only be seen on an island facing the open sea Standup paddle board is a fantastic way to see the island from a different perspective. Stand on the board and go on the surface of the water and enjoy the Rishiri blue.

A private coach will take you to Oshidomari Port Ferry Terminal and the service ends. We hope that you enjoy the trip, and we are delighted to see you again.

Day-by-day Itinerary



Mountain Bikes paved road 18km

Activity: Cycling & Standup paddle board

Course guide: Cycling
Difficulty: 2
Distance: approx. 18km
Time required: approx. 2hr
Start / Finish: Oshidomari Port Ferry Terminal

Standup paddle board
Difficulty: 1
Time required: approx. 2.5hr

Meals provided: Lunch



What's included

- Experienced through guide, cycling guide, and Standup paddle board guide
- Equipment for tree cycling and Standup paddle board
- Lunch
- Transport in Rishiri Island

We provide & What to bring

We provide

- Cycling: Rental bicycle, Helmet
- Standup paddle board : Paddle, Life jacket, Wet suit, Leash cord, Marine boot

The standard for the majority of our Standup paddle board trips



What to bring

Since we will have two strong activities, please wear the clothes that is suitable for cycling (windproof, warm, waterproof). For shoes, please wear at least sneakers is highly recommended. And In case of rainy days, don't forget to bring a raingear such as raincoat with you. Also bring your own water bottle as well for environmental protection.

Standup paddle board

You may be wondering what to bring on your Standup paddle board adventure. You will be fitted out with a wetsuit but as we run rafting tours rain or shine you are likely to get wet, and don't forget to bring a spare change of clothes and a towel.

We recommend that you wear loose fitting clothes, avoid skirts, jeans and any material that does not stretch. Please also ensure you bring an extra layer of clothing.

Recommended/Optional item

- Personal first aid kit - On each walk a first aid kit is carried but you should have your own blister kit, supply of band-aids, aspirin and other personal essentials.
- Insect repellent
- Anti-insect Measures: Bug spray, saline solution, anti-itch medication

About us

ANA X Inc. handle ticket sales and travel business operations for the ANA Group. Our mission is to provide a high quality of service and products and to deliver the most satisfying travel experience.

The Leisure Travel Business Division develops and markets original tour products. We are committed to fulfilling the expectations of our customers and offering unique and attractive and original tour products.

ANA has been highly commended [by SKYTRAX] for its consistently superior quality of service and for its dedication towards the further improvement of the tourist experience to meet the growing needs of global customers. Furthermore, ANA is currently the only Japanese airline to have achieved the exclusive 5-star status for 8 consecutive years.

Using the ANA Group motto “Trustworthy, Heartwarming, Energetic!” as the foundation of our operations, we will continue to treat our customers sincerely and provide safe travel products with high added value, while further improving our services through the united efforts of all of our employees.

Guides

Your guide will share first-hand knowledge and unique insights so that you experience new cultures and discover authentic experiences.

Activities guide

Your cycling & Standup paddle board guides are experienced and licensed . They are familiar with the unique appeals of Rishiri Island with enriching experience and experience of living abroad.

Through guide

Our English-speaking experienced guide will provide you the best service, support and assistance as possible for all the time.

Information and Requirements

Dietary Restrictions

Please inform us of any food allergies or special dietary requirements and we will be happy to accommodate you. However, there is no guarantee that we will be able to accommodate all food intolerances/special diets.

Emergency Response Plan

All guides of this tour will be trained in Advanced First Aid Course or Standard First Aid Course given by a municipal fire department of Japan. We will prepare the first aid kit for the tour and establish guidelines for emergency situations, including contacting medical facilities and transport procedure. An English-speaking guide will accompany you and provide support, such as filling out the medical questionnaire.

Reservation & Cancellation Policy

Payment Methods

Once your booking is confirmed, we will inform you the payment procedure by mail. You can settle the payment by Visa or Mastercard.

Cancellation

<u>Cancellation Date</u>	<u>Cancellation Fee</u>
21 or more days prior to the starting day of the tour	Free
20 to 8 days prior to the starting day of the tour	20% of the Tour Fare
7 to 2 days prior to the starting day of the tour	30% of the Tour Fare
1 day prior to the starting day of the tour	40% of the Tour Fare
On the date of departure	50% of the Tour Fare
Cancelled after the start of the tour Failure to show without notice	100% of the Tour Fare

*Refund process may take up to two months depending on when the refund request is received, and the closing date and refund processing procedure conditions of your credit card company. It will be credited to your credit card at the time you purchased the package.

Partner Company

RISHIRI ACTIVITY

Tour Operator / Contact

ANA X Inc.

Address :Front Place Nihonbashi, 2-14-1, Nihonbashi, Tokyo 103-0027, Japan

Contact: inb03@ana-x.co.jp